



# BRUCE WAKE 2010 ACCESS CLASS WORLD CHAMPIONSHIPS SKUD 18 International Championship

Organised by Rutland Sailing Club, United Kingdom, in conjunction with the Access Class Association UK  
for and on behalf of the International Access Class Association

**To be held from June 4<sup>th</sup> to 11<sup>th</sup> 2010**

## **SAILING INSTRUCTIONS** vfinal

### **1. RULES**

- 1.1 The regatta will be governed by the rules as defined in *The Racing Rules of Sailing*.
- 1.2 Racing rules will be changed as follows:
  - a) Receiving outside help often breaks Rule 41. However, when a crew is in danger, requires assistance to perform a safety task or requires medical attention, the jury may decide a lesser penalty than disqualification provided the crew's boat remains in the same area whilst assistance is given (amending rule 64.1(a)). Any occurrence of help must be reported in writing to the jury before the protest time limit, who shall then decide the appropriate action. The jury will not penalise actions based solely on safety or medical attention.
  - b) Full servo boats shall display a red streamer supplied by organizing authority. The Access Liberty streamer shall be attached to the top of the foremast and the Access 2.3 streamer shall be attached to the upper leech of the sail, clear of any mast-top wind indicator.
  - c) Rule 63.7 is changed. If there is a conflict between the notice of race and the sailing instructions, the sailing instructions shall prevail.
- 1.3 Access Liberty Class Rule C5 Sailor Weight Equalisation will apply.
- 1.4 If there is a conflict between languages, the English text will take precedence.

### **2. NOTICES TO COMPETITORS**

- 2.1 Notices to competitors will be posted on the official notice board(s) located in the wet bar of the clubhouse.

### **3. CHANGES TO SAILING INSTRUCTIONS**

- 3.1 Any change to the sailing instructions will be posted before 09:00 hrs on the day it will take effect, except that any change to the schedule of races will be posted by 18:00 hrs on the day before it will take effect.
- 3.2 Flag L will be displayed with a numeral pennant indicating the latest notice posted. The sequence will restart after 9.

### **4. SIGNALS MADE ASHORE**

- 4.1 Signals made ashore will be displayed on the flagpole & halyards located on the Club balcony.
- 4.2 Displaying Flag D with one sound means "The warning signal will be made in not less than 45 minutes". Boats shall not leave the shore or jetties until this signal is made.
- 4.3 Rule 40 (personal flotation devices) shall apply to all competitors whilst afloat, and flag Y will not be displayed. This changes rule 40 and the Part 4 preamble.
- 4.4 When a visual signal is displayed over a division flag, it applies to that division only. This Instruction also applies to signals whilst afloat.

### **5. SCHEDULE OF RACES**

- 5.1 The dates of racing and order of starting is as follows:

<u>Date</u>	<u>Morning Session</u>	<u>Afternoon Session</u>
Mon 7 <sup>th</sup>	Access 2.3, Access 303 single person, Access Liberty	Access 303 two person, SKUD 18
Tues 8 <sup>th</sup>	Access 303 two person, SKUD 18	Access 2.3, Access 303 single person, Access Liberty
Wed 9 <sup>th</sup>	Access 2.3, Access 303 single person, Access Liberty	Access 303 two person, SKUD 18
Thur 10 <sup>th</sup>	Access 303 two person, SKUD 18	Access 2.3, Access 303 single person, Access Liberty
Fri 11 <sup>th</sup>	Access 2.3, Access 303 single person, Access Liberty	Access 303 two person, SKUD 18

- 5.2 Two back to back races are scheduled for each division from Monday to Thursday and one race on Friday. One extra race per day may be sailed, provided that no division becomes more than one race ahead of schedule.
- 5.3 When more than one race is to be held in a session, code flag L will be displayed on the finish boat.
- 5.4 The scheduled times of the warning signals for each day are as follows:  
**Monday to Thursday:** Morning races first warning 10:55 hrs, afternoon races first warning 14:55 hrs.  
**Friday:** Morning race first warning 10:55 hrs, afternoon race 12:55 hrs
- 5.5 After a long postponement or when more than one race (or sequence of races for two or more divisions) will be held in the same session, the warning signal for the first race and each succeeding race will be made as soon as is practicable. To alert boats that a series of start sequences will begin soon, an orange flag will be displayed with one sound for at least five minutes before a warning signal is displayed.
- 5.6 On the last day of the regatta, no warning signal will be made after 15:00 hrs

- 5.7 A practice session will be held on Sunday 6th June for all divisions. The scheduled time of the warning signal for the first two-person race will be 14:00 hrs and the first single-person race at 16:00 hrs. The second launching programme & start sequence will not be delayed to allow sailors entered in two events to change boats and/or crews.

## 6. DIVISION FLAGS

- 6.1 Division flags are:

<i>Division</i>	<i>Insignia Colour</i>	<i>Background</i>
Access 2.3 Single Person	Blue	White
Access 2.3 Single Person Servo	White	Blue
Access 303 Single Person	Red	White
Access 303 Two Person	White	Red

<i>Division</i>	<i>Insignia Colour</i>	<i>Background</i>
Access Liberty	Purple	White
Access Liberty Servo	White	Purple
SKUD 18	Pink	White

## 7. RACING AREA

- 7.1 The racing area will be to the North East of the clubhouse in areas A and B (see Attachment A).

## 8. THE COURSES

- 8.1 All divisions will race in the same course area. The diagrams in Attachment B show the courses for each division, including the approximate angles between legs, the order in which marks are to be passed, and the side on which each mark is to be left.
- 8.2 No later than the warning signal, the race committee boat will display the division & course to be completed. The approximate compass bearing of the first leg may also be displayed.

## 9. MARKS

- 9.1 Course marks will be as shown in Attachment B.
- 9.2 Starting marks will be a race committee boat (including any buoy, object or boat attached to it for the duration of the starting period), and a buoy with an orange flag.
- 9.3 Finishing marks will be a race committee boat (including any buoy, object or boat attached to it for the duration of the finishing period) and a buoy with a blue flag.
- 9.4 New marks, as provided in instruction 12.1, will be the same shape and colour as the original mark.

## 10. AREAS THAT ARE OBSTRUCTIONS

- 10.1 The following are designated as obstructions; competitors shall give reasonable clearance, especially when craft are moving or drifting
- 'RUTLAND BELLE' and fishing boats afloat
  - Moored boats in the East and West Creeks
  - Red buoys marking the 'No Sailing' area at the western ends of both the north and south arms
  - Water Towers located in the area by the dam wall and northern arm.

## 11. THE START

- 11.1 Races will be started by using rule 26.
- 11.2 The order of starting will be
- Single Person: Access 2.3, Access 303, Liberty
  - Two Person: Access 303, SKUD 18
- 11.3 The starting line will be between the mast displaying an orange flag on the Race Committee boat at the starboard end and the port end starting mark.
- 11.4 Boats whose warning signal has not been made shall avoid the starting area during the starting sequence for other divisions.
- 11.5 A boat starting later than five minutes after her starting signal will be scored Did Not Start without a hearing. This changes rule A4.
- 11.6 If a general recall has been signalled, a RIB may motor ahead of the start line displaying a staff with 1st Substitute. Failure to display this signal will not be grounds for redress.

## 12. CHANGE OF THE NEXT LEG OF THE COURSE

- 12.1 Rule 33 is changed in that when the next leg of the course is changed, the race committee will move the original mark (or the finishing line) to a new position or lay a new mark and remove the original mark as soon as practicable.

## 13. THE FINISH

- 13.1 The finishing line will be between the mast displaying an orange flag on the Race Committee boat at the starboard end and the port end finishing mark.

## 14. PENALTY SYSTEM

- 14.1 For all divisions rules 44.1 and 44.2 are changed so that a One-Turn Penalty, including one tack and one gybe, replaces the Two-Turns Penalty.
- 14.2 Appendix P will apply except that all penalties shall be a One-Turn Penalty.
- 14.3 Where boats break Instructions 1.2b) (Servo streamers), 4.3 (Personal Flotation Devices), 11.4 (Keep Clear of the Start Area), 18 (Safety Regulations), 19.2 (Replacement of Equipment), 22 (Support Boats), 23 (Trash) or 24 (Berthing) the jury will decide the penalty, which may be less than a disqualification. The scoring abbreviation for a discretionary penalty imposed under this instruction will be DPI.

## **15. TIME LIMITS AND TARGET TIMES**

15.1 The times for all divisions will be:

**Race Time Limit** - 60 minutes; **Mark 1 Time Limit** - 20 minutes; **Target Race Time** (1<sup>st</sup> boat to finish) - 40 minutes.

If no boat has passed Mark 1 within the Mark 1 time limit, the race will be abandoned. Failure to meet the target time will not be grounds for redress. This changes rule 62.1(a).

15.2 Boats failing to finish within twenty minutes after the first boat sails the course and finishes will be scored Did Not Finish without a hearing. This changes rules 35 and A4 and A5.

## **16. PROTESTS AND REQUESTS FOR REDRESS**

16.1 Boats with right of way shall take into consideration possible delayed reaction times & possible limited manoeuvrability of other sailors. The jury will take this into consideration when hearing a protest involving right of way rules.

16.2 Protest forms are available from the race office. Protests and requests for redress or reopening shall be delivered there within the appropriate time limit.

16.3 For each division, the protest time limit is 90 minutes after the last boat has finished the last race of the day, for that division.

16.4 Notices will be posted no later than 30 minutes after the protest time limit to inform competitors of hearings in which they are parties or named as witnesses. Hearings will be held in the protest room, beginning at the time posted.

16.5 Notices of protests by the race committee or jury will be posted to inform boats under rule 61.1(b).

16.6 Breaches of instructions 1.2b), 4.3, 11.4, 18, 19.2, 22, 23 and 24 will not be grounds for a protest by a boat. This changes rule 60.1(a).

16.7 On the last scheduled day of racing, a request for reopening a hearing shall be delivered

a) within the protest time limit if the requesting party was informed of the decision on the previous day;

b) no later than 30 minutes after the requesting party was informed of the decision on that day. This changes rule 66.

16.8 On the last scheduled day of racing, a request for redress based on a jury decision shall be delivered no later than 30 minutes after the decision was posted. This changes rule 62.2.

16.9 Decisions of the international jury will be final as provided in rule 70.5.

16.10 For boats chartered from the organising authority, gear failure will not be grounds for redress.

## **17. SCORING**

17.1 Four races are required to be completed to constitute a series.

When six or more races have been completed, a boat's series score will be the total of her race scores excluding her worst score.

When nine races have been completed, a boat's series score will be the total of her race scores excluding her two worst scores.

17.2 To request correction of an alleged error in published race or series results, a boat shall complete a scoring enquiry form available at the race office.

## **18. SAFETY REGULATIONS**

18.1 Check-out and check-in. The requirements of this instruction are specified for the safety of competitors.

a) The tally control point to check-out and check-in competitors will be located in 'Len's Den' (a bus shelter near the jetties).

b) Tallies comprise of numbered rubber wristbands and numbers will be issued at registration along with a tally tag, which must be attached to your trolley for the duration of the championship.

c) Tallies shall be worn visibly, over clothing, preferably on the right wrist if possible, by both helm and crew at all times while afloat.

d) Both helm and crew shall check-out before racing by collecting their tally.

e) Both helm and crew shall check-in immediately on returning to shore after racing, but no later than the protest time limit, by returning the tally personally to tally control.

f) A responsible representative may tally in and tally out on behalf of competitors who are unable to do so themselves.

18.2 A boat that retires from a race shall notify a race committee boat or safety patrol boat of their intention before leaving the race area.

## **19. REPLACEMENT OF CREW OR EQUIPMENT**

19.1 Substitution of competitors will not be allowed without prior written approval of the race committee.

19.2 No part of a boat shall be replaced during the regatta, other than to replace equipment damaged beyond repair, before the next race. Such replacements may be made only with the approval of the race committee and no re-substitutions of the original equipment may then be made, except with the approval of the race committee. Requests for substitution shall be made to the committee at the first reasonable opportunity.

Where equipment is being used in more than one event and substitution/re-substitution is necessary, details shall be provided in writing to the race committee before the first race of the regatta.

## **20. EQUIPMENT AND MEASUREMENT CHECKS**

20.1 A boat or equipment may be inspected at any time for compliance with the class rules and sailing instructions. On the water, a boat can be instructed by a race committee equipment inspector to proceed immediately to a designated area for inspection.

## **21. ADVERTISING**

21.1 Boats shall display advertising supplied by the organizing authority on either side of the bow.

## **22. SUPPORT BOATS**

22.1 Team leader, coach and other support personnel boats shall display their national flag. Support boats shall stay outside areas where boats are racing from the time of the preparatory signal until all boats have finished or retired or the race committee signals a postponement, general recall or abandonment, unless attending a boat in distress requiring assistance, or as directed by the race committee.

### 23. TRASH DISPOSAL

23.1 Boats shall not put trash in the water. Trash may be placed aboard support and race committee boats.

### 24. BERTHING & HAUL-OUT RESTRICTIONS

24.1 Boats shall be kept in their assigned places in the boat park until given permission to launch (see Instruction 4.2).

24.2 Liberty & SKUD 18 divisions shall not be hauled out during the regatta unless instructed otherwise by the race committee.

### 25. DISCLAIMER OF LIABILITY

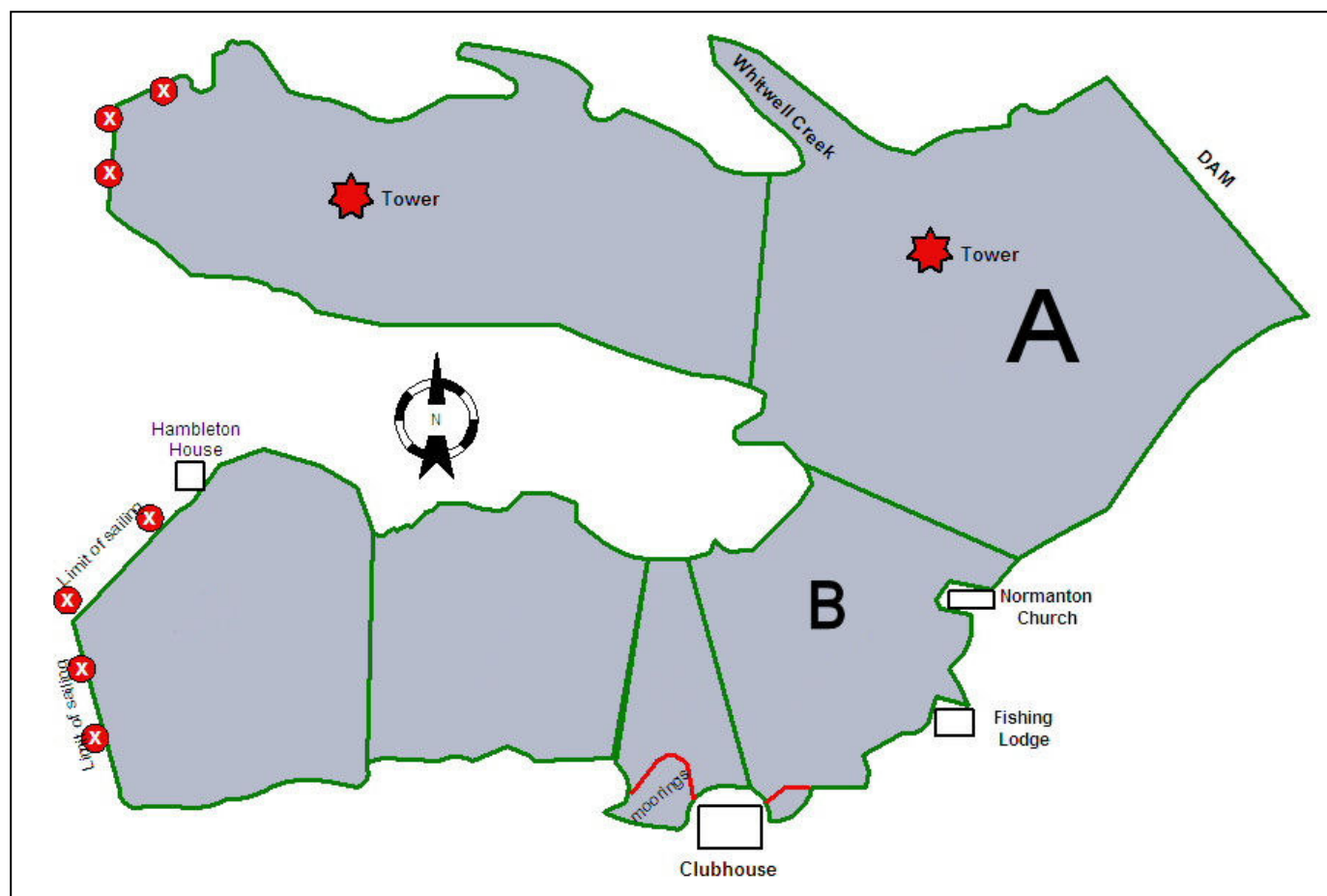
25.1 Competitors take part in all races at their own risk. Rutland Sailing Club and the International and UK Class Associations or any of their officials or representatives or the sponsors or their officials or representatives are not responsible under any circumstances for any damage, loss or injury either ashore or on the water either to persons or equipment. Participation in this regatta, supporting events and in each race in them is at the sole discretion of the sailor and at his/her own risk. Notice is drawn to Rule 4.

### 26. LOCAL VARIATIONS

26.1 Due to an Anglian Water authority ban on anchoring in some parts of the South East section of the reservoir, some alterations in course angles and positioning of marks or committee boats may have to be taken into consideration.

26.2 Water temperature is low, all precautions should be taken to avoid hypothermia.

## ATTACHMENT A – RACING AREAS



## ATTACHMENT B – COURSES, START SEQUENCE & WARNING TIMES

The following pages identify, for each class:

- Courses to be sailed,
- Start sequence and class flags,
- Scheduled warning for the first start of the sequence, and
- Order of starting in each sequence





A laminated version of the relevant schedule will be provided to each competitor at registration

## ACCESS 2.3 AND ACCESS 2.3 SERVO

**O**

**Course: Outer Trapezoid**

Signal	Marking Rounding Order
O2	Start - 1 - 2 - 3 - 2 - 3 - Finish
O3	Start - 1 - 2 - 3 - 2 - 3 - 2 - 3 - Finish
O4	Start - 1 - 2 - 3 - 2 - 3 - 2 - 3 - 2 - 3 - Finish

Start Sequence		
-5		↑
-4		↑
-1		↓
0		↓

Scheduled Warning	
Sun (practice)	16:00 hrs
Mon	10:55 hrs
Tues	14:55 hrs
Wed	10:55 hrs
Thur	14:55 hrs
Fri	10:55 hrs

### Starting Order

1<sup>st</sup> Access 2.3; 2<sup>nd</sup> 303 single, 3<sup>rd</sup> Liberty

### Course Marks

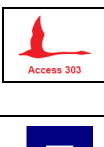



1	Yellow spherical buoy
2	Black spherical buoy
3	Black spherical buoy
4	Yellow spherical buoy
1a	Black spherical buoy

## ACCESS 303 SINGLE PERSON

**I**

**Course: Inner Trapezoid**

Signal	Marking Rounding Order
I2	Start - 1 - 4 - 1 - 2 - 3 - Finish
I3	Start - 1 - 4 - 1 - 4 - 1 - 2 - 3 - Finish
I4	Start - 1 - 4 - 1 - 4 - 1 - 4 - 1 - 2 - 3 - Finish

Start Sequence		
-5		↑
-4		↑
-1		↓
0		↓

Scheduled Warning	
Sun (practice)	16:00 hrs
Mon	10:55 hrs
Tues	14:55 hrs
Wed	10:55 hrs
Thur	14:55 hrs
Fri	10:55 hrs

### Starting Order

1<sup>st</sup> Access 2.3; 2<sup>nd</sup> 303 single, 3<sup>rd</sup> Liberty

### Course Marks

1	Yellow spherical buoy
4	Yellow spherical buoy
2	Black spherical buoy
3	Black spherical buoy
1a	Black spherical buoy

## ACCESS LIBERTY AND LIBERTY SERVO

**LI**

Course: Long Inner Trapezoid

Signal	Marking Rounding Order
<b>LI 2</b>	Start -1a- 4 -1a- 2 - 3 - Finish
<b>LI 3</b>	Start -1a- 4 -1a- 4 -1a- 2 - 3 - Finish
<b>LI 4</b>	Start -1a- 4 -1a- 4 -1a- 4 -1a- 2 - 3 - Finish

Start Sequence		
-5		↑
-4		↑
-1		↓
0		↓

Scheduled Warning	
Sun (practice)	16:00 hrs
Mon	10:55 hrs
Tues	14:55 hrs
Wed	10:55 hrs
Thur	14:55 hrs
Fri	10:55 hrs

### Starting Order

1<sup>st</sup> Access 2.3; 2<sup>nd</sup> 303 single, **3<sup>rd</sup> Liberty**

### Course Marks

1a	Black spherical buoy
4	Yellow spherical buoy
2	Black spherical buoy
3	Black spherical buoy
1	Yellow spherical buoy

## ACCESS LIBERTY 303 TWO PERSON

**O**

Course: Outer Trapezoid

Signal	Marking Rounding Order
<b>O2</b>	Start - 1 - 2 - 3 - 2 - 3 - Finish
<b>O3</b>	Start - 1 - 2 - 3 - 2 - 3 - 2 - 3 - Finish
<b>O4</b>	Start - 1 - 2 - 3 - 2 - 3 - 2 - 3 - 2 - 3 - Finish

Start Sequence		
-5		↑
-4		↑
-1		↓
0		↓

Scheduled Warning	
Sun (practice)	14:00 hrs
Mon	14:55 hrs
Tues	10:55 hrs
Wed	14:55 hrs
Thur	10:55 hrs
Fri	12:55 hrs

### Starting Order

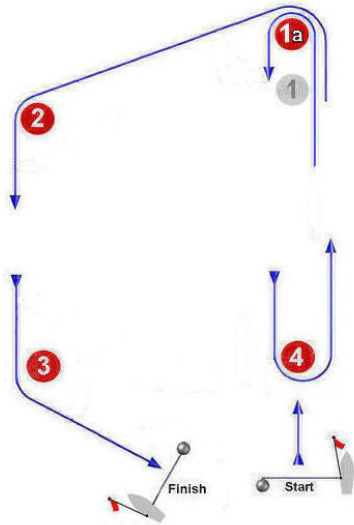
**1<sup>st</sup> Access 303 two person**; SKUD 18

### Course Marks

1	Yellow spherical buoy
2	Black spherical buoy
3	Black spherical buoy
4	Yellow spherical buoy
1a	Black spherical buoy

**SKUD 18**

**LI**



Course: Long Inner Trapezoid

Signal	Marking Rounding Order
<b>LI 2</b>	Start -1a- 4 -1a- 2 - 3 - Finish
<b>LI 3</b>	Start -1a- 4 -1a- 4 -1a- 2 - 3 - Finish
<b>LI 4</b>	Start -1a- 4 -1a- 4 -1a- 4 -1a- 2 - 3 - Finish

**Start Sequence**

-5	SKUD 18	↑
-4	P	↑
-1	P	↓
0	SKUD 18	↓

**Scheduled Warning**

Sun (practice)	14:00 hrs
Mon	14:55 hrs
Tues	10:55 hrs
Wed	14:55 hrs
Thur	10:55 hrs
Fri	12:55 hrs

**Starting Order**

1<sup>st</sup> Access 303 two person; **2<sup>nd</sup> SKUD 18**

**Course Marks**

1a	Black spherical buoy
4	Yellow spherical buoy
2	Black spherical buoy
3	Black spherical buoy
1	Yellow spherical buoy